

# ESSENTIAL RESEARCH METHODOLOGY FOR ANAESTHESIA

## Friday 22 November 2013

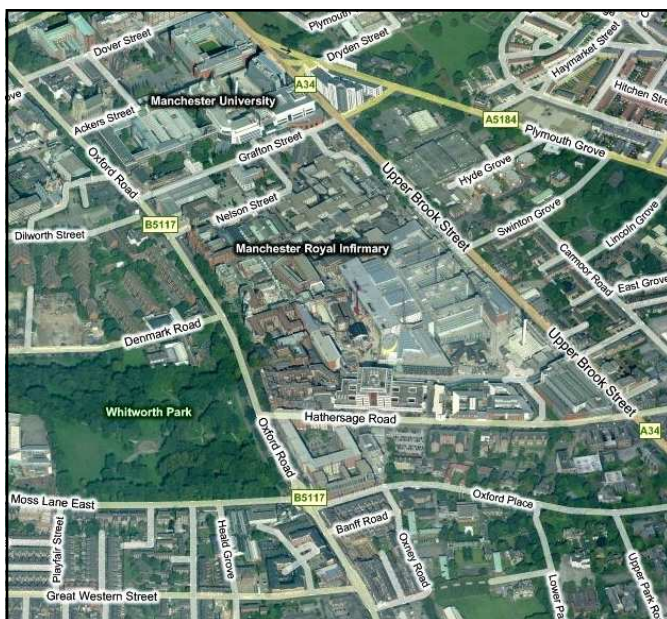
This is a one day intensive course and an essential part of your training. Examples will be drawn from real-world research in anaesthesia.

5 CPD points have been awarded for this course by the RCOA.

Venue:

The course will be held at the following location:

Meeting Rooms A,B & C,  
Maternal & Fetal Research Centre,  
University of Manchester  
5th Floor (Research), St Mary's Hospital,  
Oxford Road, Manchester, M13 9WL



## Refreshments

Coffee, tea and biscuits will be available.

## Lunch

Lunch will be provided free of charge to all course participants. If you have any special dietary requirements please indicate on the booking form.

## Accommodation

The course is non-residential. If accommodation is required, a hotel list is available on request. Please note, however, that participants are responsible for their own hotel bookings and payments.

## Map

A map will be emailed to you upon registration displaying venue and parking details.

## Parking

Reduced rate parking will only be available at the Hathersage Road multi storey car park. The reduced rate is currently £5.00. In order to obtain this YOU MUST bring with you on the day your NHS ID card. Security will have a list of names of people attending the course.

## Programme

This will be e-mailed to you prior to the course commencing.

## CLOSING DATE FOR APPLICATIONS

### 1 November 2013

## ESSENTIAL RESEARCH METHODOLOGY FOR ANAESTHESIA Booking Form for 22 November 2013

Surname:

Forenames:

Address:

Daytime Tel No:

Email:

Hospital:

I am a (please ring): TRAINEE / CONSULTANT

If you are a TRAINEE are you on the north west regional rotation?: YES / NO

Special Dietary Requirements: YES / NO  
*If yes please indicate*

### REGISTRATION FEE Trainees £75\* / Consultants £100\*\*

\* Trainees: this is an approved course and the fee should be covered by the STC for north west rotational trainees. **Please be sure to fill out your study leave form in advance of attending the course.** Forms can be emailed, posted or faxed. Details below.

\*\* Consultants: cheques should be made payable to 'CMFT Charity 9525' and included with your registration form. Please post to the address below.

Non-North West doctors: Any doctors outside the north west who wish to attend should make their cheques out for the appropriate amount to 'CMFT Charity 9525' and include with your registration forms. Please post to the address below.

John Prince, Course Co-ordinator  
Department of Anaesthesia,  
5th Floor, St. Mary's Hospital, Manchester, M13 9WL

Tel: 0161 276 4558, Fax: 0161 276 8027  
Email: john.a.prince@manchester.ac.uk